

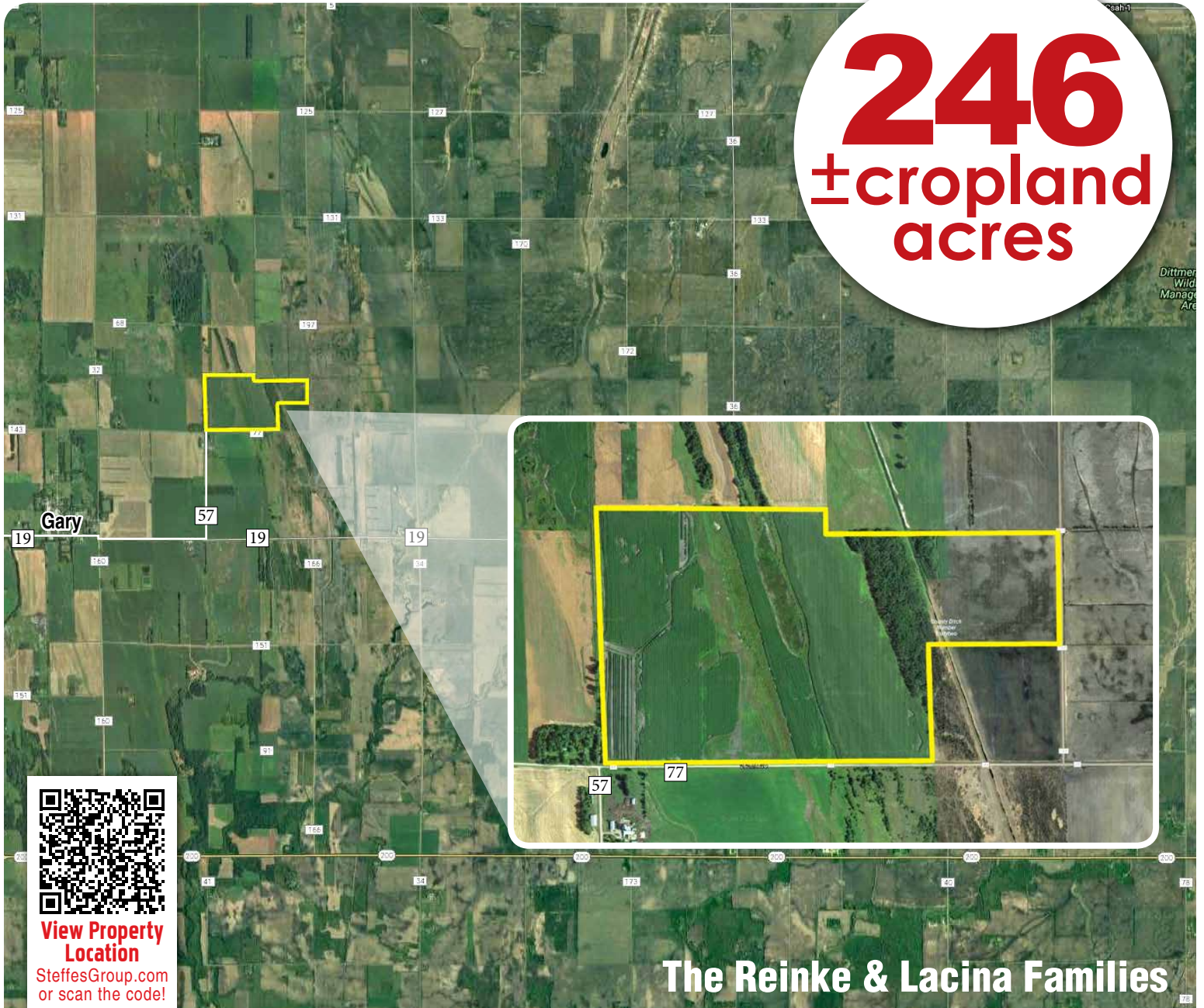
Norman County, MN | Farmland for Rent

request for

due by Friday, February 24, 2017

PROPOSAL

246
± cropland
acres



View Property Location

SteffesGroup.com
or scan the code!

The Reinke & Lacina Families

Norman County, MN | Farmland for Rent

Steffes Group, Inc., 2000 Main Avenue East, West Fargo, ND 58078
800.726.8609 | 701.237.9173 | SteffesGroup.com



REQUEST for Proposal Criteria

- Cropland Acres: 246.57+/-

NORMAN COUNTY, MN – STRAND TWP

- N1/2 SE1/4, SW1/4 SE1/4 & W1/2 LESS (N 2374.78 FT OF NW1/4) Section 11-145-44

LENGTH OF AGREEMENT: 2017, 2018, & 2019 Crop Years (3 years)

- Proposals must be received by 5:00PM on Friday, February 24, 2017

CROPLAND PAYMENTS: Due upon signing rental agreement for the 2017 crop year and March 1st of 2018 and 2019.

TERMS & REQUIREMENTS:

- Proposal should be submitted based on a per acre basis.
- The rental agreement will be based on the current FSA Cropland Acres of 246.57
- All proposals must be received by **5:00 P.M. Friday, February 24th, 2017.**
- Notification and award of the farm will be given once evaluations have been completed on or before **5:00PM, Wednesday, March 1st, 2017.**
- Contract signing will take place at the Steffes Group office in West Fargo.
- **There will be no oral bidding/raise opportunity. Interested parties should submit their highest and best bid.**

CONSIDERATIONS:

- While price is a significant factor, it will not be the only criteria to award the final rental agreement.

The Reinke & Lacina Families are seeking proposals to enter into a Tenant/Landlord relationship for the following described farmland located Northeast of Gary in Norman County, MN.

Directions to Land: From Gary, MN, go east 1 mile on Co. Hwy 19, north 1 mile on Co. Rd. 57. Land on north side of road.

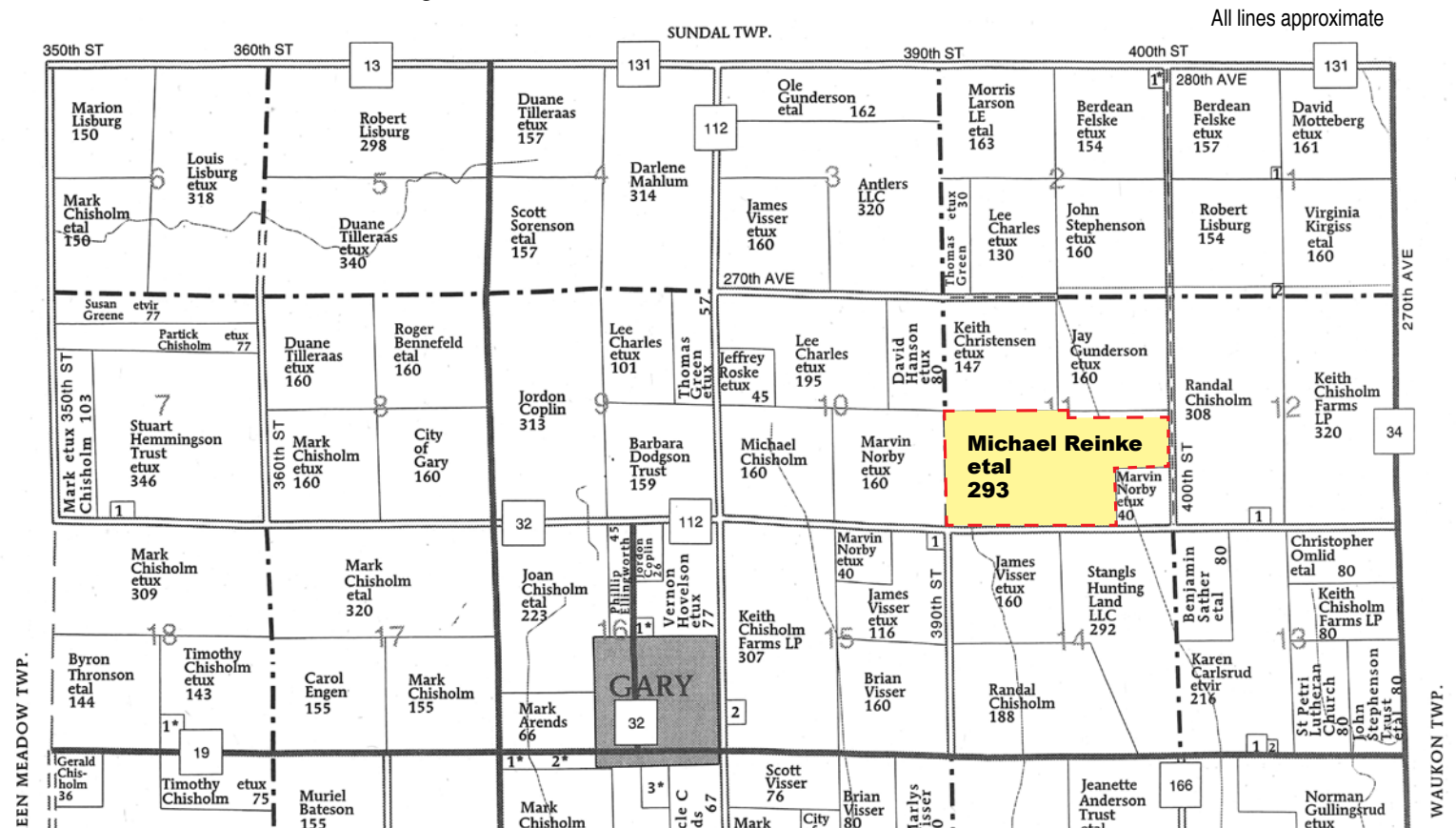
- Stewardship of the land, excellent farming practices, quality equipment, capacity and resources will all be factors.
- Interested parties should present a proposal in a professional manner that proves and demonstrates these abilities. The proposals might include timelines of farm histories, inventories of equipment available, projected crop rotations, letters of recommendations from other landlords/vendors or lenders.
- Demonstration or proof of financial stability/position will also be considered.
- All positive criteria will be evaluated so any pertinent data, pictures, history and qualifications will be helpful.
- The proposals must be in the form of a written document. An oral presentation will not be considered.

For details please contact Max Steffes at Steffes Group with questions 701.237.9173 or 701.212.2849.

All proposals & bids must be received no later than 5:00 PM Friday, February 24, 2017.

**Mail to: Steffes Group, Inc.
2000 Main Avenue East
West Fargo, ND 58078**

Email to: Max.Steffes@SteffesGroup.com



All lines approximate

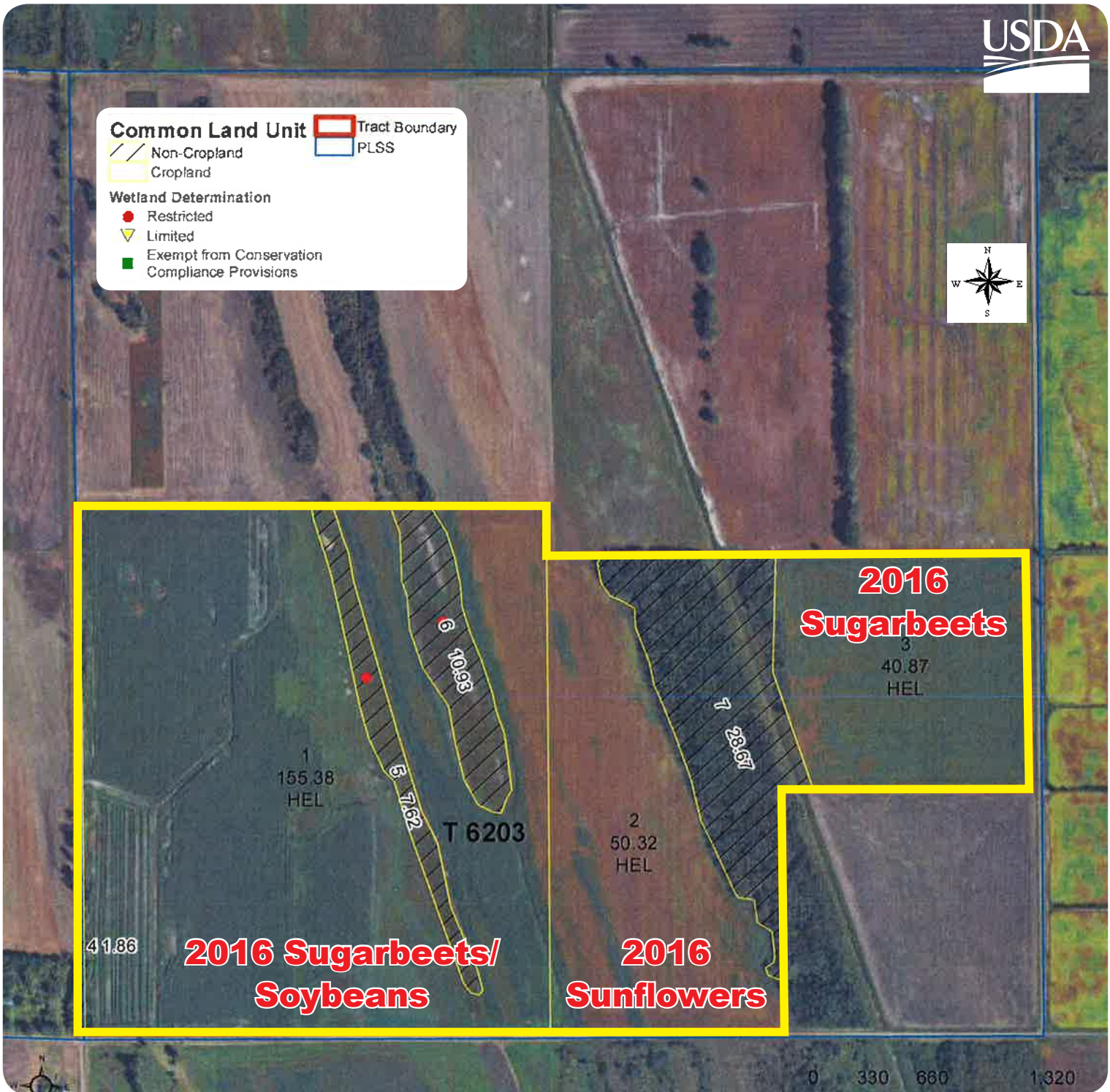


Common Land Unit

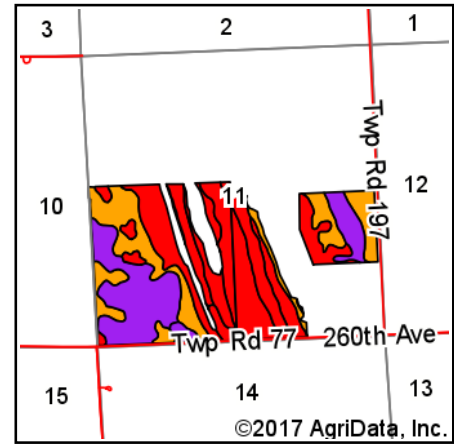
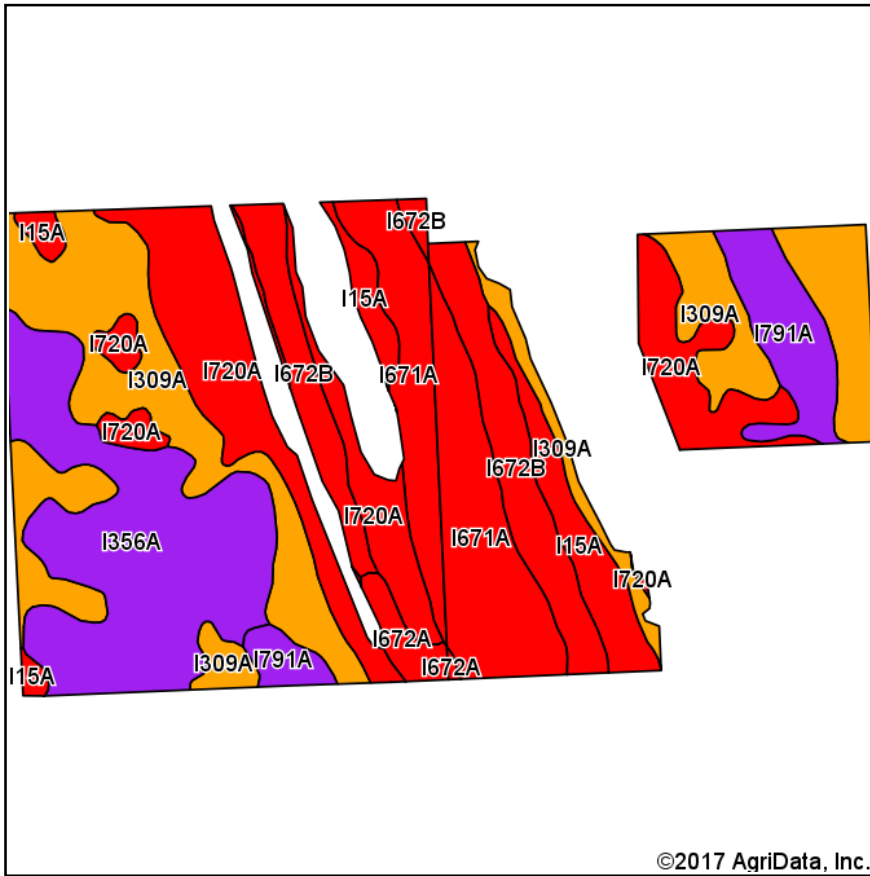
- Tract Boundary
- PLSS
- Non-Cropland
- Cropland

Wetland Determination

- Restricted
- Limited
- Exempt from Conservation Compliance Provisions



United States Department of Agriculture (USDA) Farm Service Agency (FSA) maps are for FSA Program administration only. This map does not represent a legal survey or reflect actual ownership; rather it depicts the information provided directly from the producer and/or National Agricultural Imagery Program (NAIP) imagery. The producer accepts the data 'as is' and assumes all risks associated with its use. USDA-FSA assumes no responsibility for actual or consequential damage incurred as a result of any user's reliance on this data outside FSA Programs. Wetland identifiers do not represent the size, shape, or specific determination of the area. Refer to your original determination (CPA-026 and attached maps) for exact boundaries and determinations or contact USDA Natural Resources Conservation Service (NRCS).



State: **Minnesota**
 County: **Norman**
 Location: **11-145N-44W**
 Township: **Strand**
 Acres: **246.57**
 Date: **2/2/2017**



Maps Provided By:
surety
 CUSTOMIZED ONLINE MAPPING
 © AgriData, Inc. 2017 www.AgriDataInc.com



Soils data provided by USDA and NRCS.

Area Symbol: MN107, Soil Area Version: 14

| Code | Soil Description | Acres | Percent of field | PI Legend | Non-Irr Class *c | Irr Class *c | Productivity Index |
|-------------------------|---|-------|------------------|-----------|------------------|--------------|--------------------|
| I309A | Arveson loam, 0 to 1 percent slopes | 62.13 | 25.2% | | IIw | | 74 |
| I356A | Ulen fine sandy loam, 0 to 2 percent slopes | 46.13 | 18.7% | | IIIe | | 55 |
| I720A | Arveson-Venlo complex, 0 to 1 percent slopes | 45.22 | 18.3% | | IVw | | 15 |
| I671A | Sioux gravelly sandy loam, 0 to 2 percent slopes | 35.19 | 14.3% | | VI s | | 33 |
| I672B | Sioux sandy loam, 2 to 6 percent slopes | 25.02 | 10.1% | | VI s | | 33 |
| I15A | Hecla loamy fine sand, 0 to 2 percent slopes | 14.89 | 6.0% | | IVe | IIIe | 50 |
| I791A | Ulen fine sandy loam, thin surface, 0 to 2 percent slopes | 14.48 | 5.9% | | IIIe | | 55 |
| I672A | Sioux sandy loam, 0 to 2 percent slopes | 3.51 | 1.4% | | VI s | | 33 |
| Weighted Average | | | | | | | 46.5 |

Area Symbol: MN107, Soil Area Version: 14

*c: Using Capabilities Class Dominant Condition Aggregation Method

Soils data provided by USDA and NRCS.



FARM: 7716

Minnesota
Norman

U.S. Department of Agriculture
Farm Service Agency

Prepared: 1/31/17 9:59 AM
Crop Year: 2017

Report ID: FSA-156EZ

Abbreviated 156 Farm Record

Page: 1 of 1

DISCLAIMER: This is data extracted from the web farm database. Because of potential messaging failures in MIDAS, this data is not guaranteed to be an accurate and complete representation of data contained in the MIDAS system, which is the system of record for Farm Records.

| | | |
|----------------------|------------------------|---------------------|
| Operator Name | Farm Identifier | Recon Number |
| | 08DIV1292=7715+7716 | 2008 27107 6 |

CRP Contract Number(s): None

| Farmland | Cropland | DCP Cropland | WBP | WRP/EWP | CRP Cropland | GRP | Farm Status | Number of Tracts |
|--------------------|--------------------|------------------------|----------------|---------|--------------|-----|-------------|------------------|
| 295.65 | 246.57 | 246.57 | 0.0 | 0.0 | 0.0 | 0.0 | Active | 1 |
| State Conservation | Other Conservation | Effective DCP Cropland | Double Cropped | MPL/FWP | Native Sod | | | |
| 0.0 | 0.0 | 246.57 | 0.0 | 0.0 | 0.0 | | | |

ARC/PLC

| | | | |
|----------------|-----------------------|--------------|---------------------|
| ARC-IC NONE | ARC-CO WHEAT, CORN | PLC BARLY | PLC-Default NONE |
|----------------|-----------------------|--------------|---------------------|

| Crop | Base Acreage | CTAP Tran Yield | PLC Yield | CCC-505 CRP Reduction |
|--------------------------|--------------|-----------------|-----------|-----------------------|
| WHEAT | 102.4 | | 32 | 0.0 |
| CORN | 20.5 | | 51 | 0.0 |
| BARLEY | 94.4 | | 64 | 0.0 |
| Total Base Acres: | 217.3 | | | |

Tract Number: 6203 Description: W2SE4,NE4SE4,SW4,SO 14A IN NW4-11 ST

BIA Range Unit Number:

HEL Status: HEL: conservation system is being actively applied

Wetland Status: Tract contains a wetland or farmed wetland

WL Violations: None

| Farmland | Cropland | DCP Cropland | WBP | WRP/EWP | CRP Cropland | GRP |
|--------------------|--------------------|------------------------|----------------|---------|--------------|-----|
| 295.65 | 246.57 | 246.57 | 0.0 | 0.0 | 0.0 | 0.0 |
| State Conservation | Other Conservation | Effective DCP Cropland | Double Cropped | MPL/FWP | Native Sod | |
| 0.0 | 0.0 | 246.57 | 0.0 | 0.0 | 0.0 | |

| Crop | Base Acreage | CTAP Tran Yield | PLC Yield | CCC-505 CRP Reduction |
|--------------------------|--------------|-----------------|-----------|-----------------------|
| WHEAT | 102.4 | | 32 | 0.0 |
| CORN | 20.5 | | 51 | 0.0 |
| BARLEY | 94.4 | | 64 | 0.0 |
| Total Base Acres: | 217.3 | | | |

Owners: MICHAEL G REINKE

BARBARA LACINA

Other Producers: None





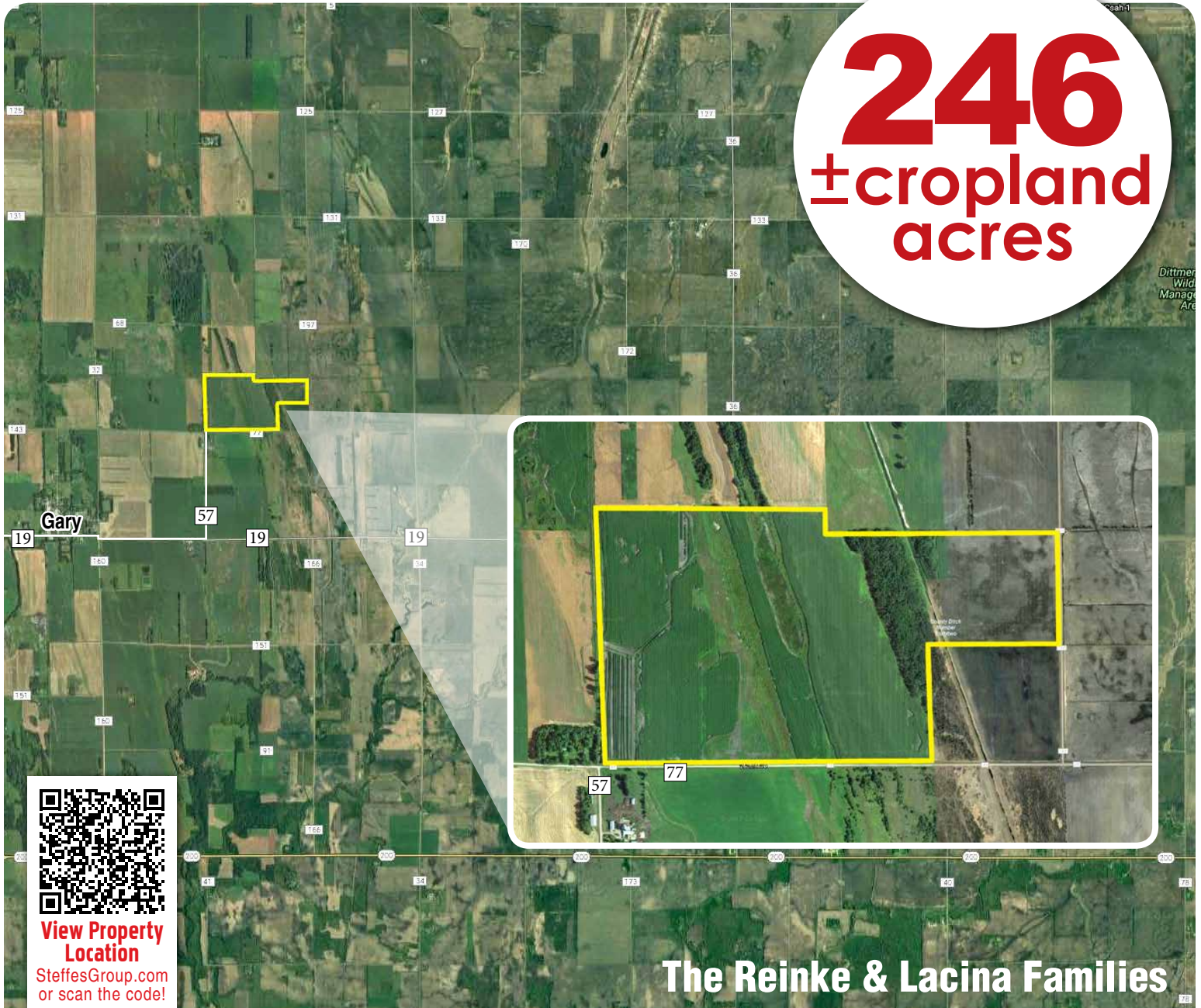
Norman County, MN | Farmland for Rent

request for

due by Friday, February 24, 2017

PROPOSAL

246
± cropland
acres



View Property Location

SteffesGroup.com
or scan the code!

The Reinke & Lacina Families

Norman County, MN | Farmland for Rent

Steffes Group, Inc., 2000 Main Avenue East, West Fargo, ND 58078
800.726.8609 | 701.237.9173 | SteffesGroup.com

